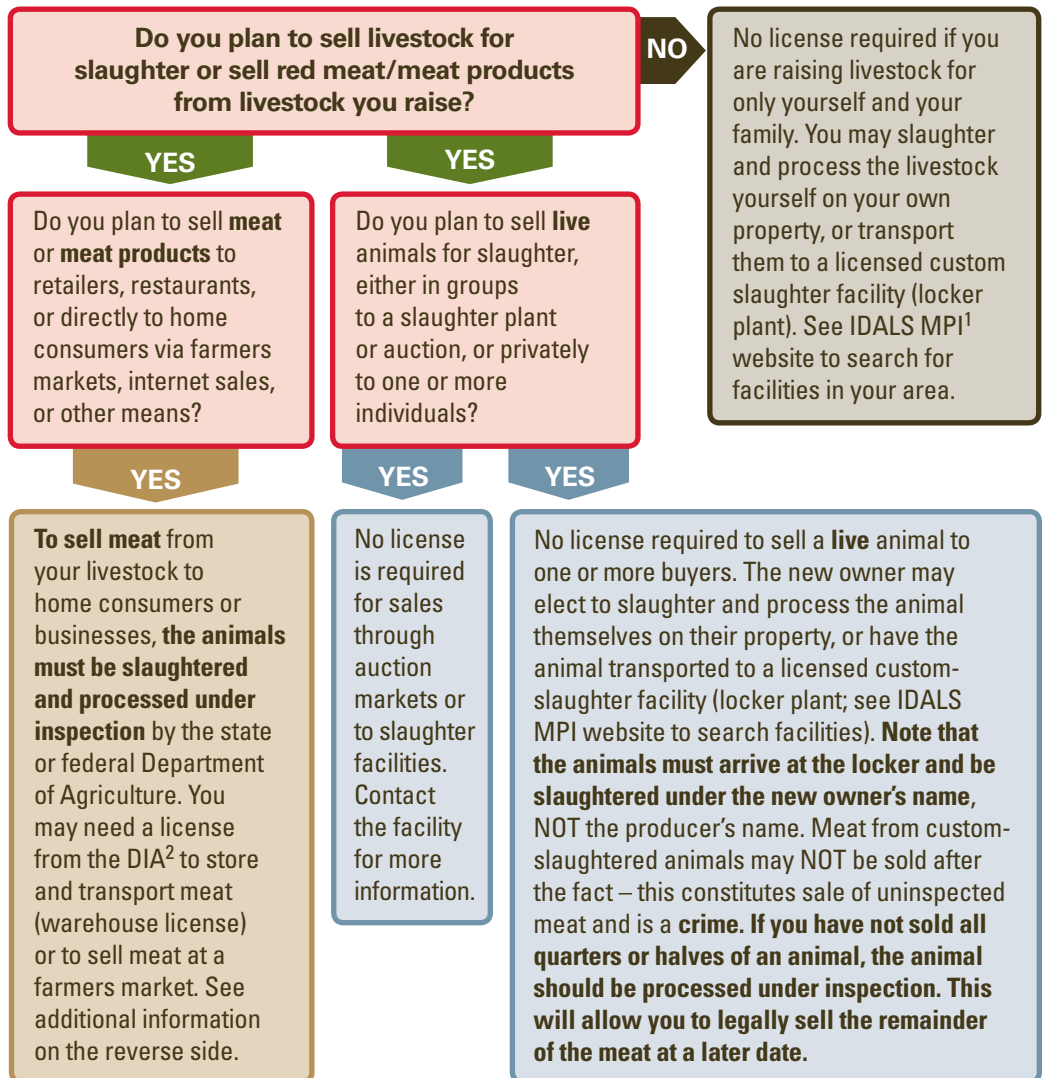




Prepared by Dr. Kathryn Polking, DVM, bureau chief, Iowa Department of Agriculture and Land Stewardship and Meat and Poultry Inspection Bureau.

As new agriculture entrepreneurs consider producing and marketing food products and current producers seek new markets, they need to conduct preliminary research to determine if there are rules, regulations, certifications, or licenses required for their product or selected market. This series of publications will help determine the requirements for licensing and for processing and selling various food products based on business size, sales volume, the level of processing, and market. The flowchart will guide Iowa producers and processors to the appropriate state agencies or departments. Agency and department contact information, as well as additional resources, are on the reverse side of this publication.



<sup>1</sup> Iowa Department of Agriculture and Land Stewardship Meat and Poultry Inspection Bureau

<sup>2</sup> Iowa Department of Inspections and Appeals

## Additional information

### Inspected Slaughter:

State or federal Department of Agriculture inspectors examine each animal both before and after slaughter to ensure it is healthy and free of diseases which might be harmful to humans. They also verify that the plant is clean and sanitary, and keeping appropriate food-safety records. **Meat from animals which pass inspection is branded or labeled with a mark of inspection and may be sold freely within the state (if Iowa inspected) or the United States (if federally inspected).** Contact the Iowa Department of Agriculture and Land Stewardship Meat and Poultry Inspection Bureau to find inspected facilities near you.

### Warehouse and farmers market licenses:

These licenses allow you to store red meat at your facility and sell it at a particular farmers market, respectively. Contact Iowa Department of Inspections and Appeals to discuss obtaining a license.

## Resources

---

### IOWA DEPARTMENT OF INSPECTIONS AND APPEALS

515-281-6538

[www.dia.iowa.gov](http://www.dia.iowa.gov)

### IOWA DEPARTMENT OF AGRICULTURE AND LAND STEWARDSHIP MEAT AND POULTRY INSPECTION BUREAU

[www.iowaagriculture.gov/meatandpoultryinspection.asp](http://www.iowaagriculture.gov/meatandpoultryinspection.asp)

515-281-3338

[meatandpoultry@iowaagriculture.gov](mailto:meatandpoultry@iowaagriculture.gov)

### IOWA DEPARTMENT OF AGRICULTURE HORTICULTURE AND FARMERS MARKET PROGRAM

[www.iowaagriculture.gov/horticultureandFarmersMarket.asp](http://www.iowaagriculture.gov/horticultureandFarmersMarket.asp)

### U.S. DEPARTMENT OF AGRICULTURE, FOOD SAFETY AND INSPECTION SERVICE

Des Moines District Office

515-727-8960

<https://www.fsis.usda.gov/wps/portal/fsis/home>

### IOWA STATE UNIVERSITY EXTENSION AND OUTREACH PUBLICATIONS

This and other related publications can be accessed through the ISU Extension Store at <https://store.extension.iastate.edu>.

Iowa Food Hub Meat to School Series (LF 16A-16C)

<https://store.extension.iastate.edu/ProductList?Keyword=food+hub>

This publication is part of a series. Additional copies can be downloaded as PDF files at <https://store.extension.iastate.edu>.

Other titles in the series include:

**FS0016 Poultry**

**FS0017 Dairy**

**FS0018 Seafood**

**FS0019 Eggs**

**FS0020 Low Acid and Fermented Foods**

**FS0021 Jams, Jellies, and Preserves**

**FS0022 Fruit and Vegetable Juice**

**FS0023 Fruits and Vegetables (Cut)**

**FS0024 Fruits and Vegetables (Whole)**

**FS0025 Honey and Maple Syrup**